



# Dairy One News

Where Information Creates Opportunity

Scout Newsletter

## Table of Contents

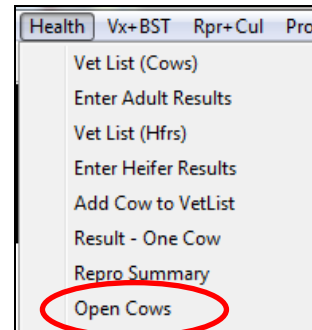
Are you using Scout to manage your Ovsynch programs?.....	1
Monitor Reports: A valuable snapshot.....	4
Daily Backups are critical.....	5
Monthly Events.....	5
Dairy Comp LS.....	6
PC Green Service .....	6

## Are you using Scout to manage your Ovsynch programs?

Scout can help you manage a 14 day Ovsynch program by finding who is eligible for enrollment and which shots the cows need once they are enrolled. In the following example the herd is using a 2 shot Presynch program followed by Ovsynch.

1. First we need to find which cows are eligible for shots.

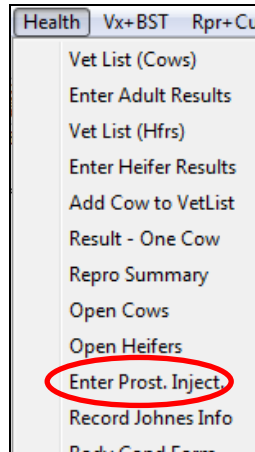
In Scout go to **Health** → **Open Cows**



Adults Eligible for Insemination																
BNAME	L	P	DIM	MILK	DSLUT	NLUT	T		BNAME	L	P	DIM	MILK	DSLUT	NLUT	T
=====	=	=	==	====	=====	=====	=		=====	=	=	==	====	=====	=====	=
1026	2	1	53	77	0	0	0	___	LACT	Lactation Number						
1018	2	1	36	41	0	0	0	___	PEN	Pen or String Number						
1010	2	1	34	67	0	0	0	___	DIM	Days in Milk						
									MILK	Current Test Day Milk Weight						
									DSLUT	Days Since Last Prostaglandin						
									NLUT	Count Total Prost. Injections						
									TBRD	Times Bred This Lactation						
Total: 3																
BNAME Barn Name (or Barn Number)																

In this example cow 1026 is ready to receive her first prostaglandin shot. She has been fresh long enough to start on shots and her DSLUT (days since last prostaglandin) is 0 and her NLUT (count total prostaglandin injections) is 0. 1018 is not far enough along in DIM to start on Presynch. You can adjust which cows you see on the Open Cow list by going to File → Herd Parameters and change the Minimum DIM for “Open Cows” Report.

2. Prostaglandin shots need to be entered. Go to **Health** → **Enter Prost. Inject.**

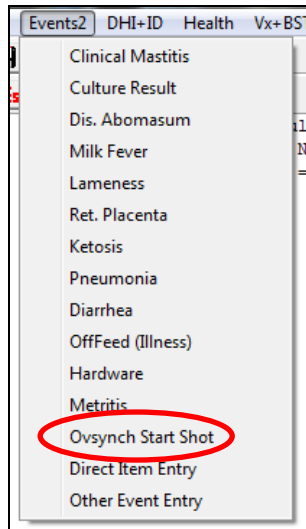


3. The Open cow list needs to be run every week on the same day of the week, to see who needs to start, who needs their second prostaglandin shot, and who needs to start on Ovsynch by using the DIM, DSLUT, and NLUT columns. Prostaglandin shots need to be 14 days apart (DSLUT=14). Once NLUT=2 and DSLUT=14 a cow is ready to start on Ovsynch. **Health** → **Open Cows**

Adults Eligible for Insemination															
BNAME	L	P	DIM	MILK	DSLUT	NLUT	T	BNAME	L	P	DIM	MILK	DSLUT	NLUT	T
1026	2	1	81	77	14	2	0	832	5	1	31	65	0	0	0
1018	2	1	64	41	7	2	0	Total: 13							
1010	2	1	62	67	14	1	0	BNAME Barn Name (or Barn Number)							
945	2	1	55	111	7	1	0	LACT Lactation Number							
922	3	1	53	82	7	1	0	PEN Pen or String Number							
1006	2	2	53	50	7	1	0	DIM Days in Milk							
1036	1	1	50	62	0	0	0	MILK Current Test Day Milk Weight							
1051	1	1	47	64	0	0	0	DSLUT Days Since Last Prostaglandin							
1046	1	1	42	56	0	0	0	NLUT Count Total Prost. Injections							
1067	1	1	39	67	0	0	0	TBRD Times Bred This Lactation							
1099	1	1	34	56	0	0	0								
1096	1	1	32	43	0	0	0								

In this example the farm has been running the Presynch/Ovsynch program for several weeks. Cow 1026 is ready for her GnRH shot to start Ovsynch because her DSLUT=14 and NLUT=2. 1018 is on her off week in-between her second prostaglandin shot and Ovsynch because her DSLUT=7 and NLUT=2. 1010 is ready for her second prostaglandin shot, she is 14 days since her last prostaglandin and has already gotten 1 shot. 945, 922, and 1006 are in-between their first and second prostaglandin shots because their DSLUT=7 and NLUT=1. 1036 and 1051 need to start on their first prostaglandin shots because their NLUT=0 and they are far enough in DIM to start.

4. Once a cow starts on Ovsynch her first shot needs to be entered, **Events2** → **Ovsynch Start Shot**. Open cows on vet day; who need to start on Ovsynch can also be entered here.



5. The Ovsynch shot list will have the date the cows need all their Ovsynch shots, **Rpr + Cul** → **Ovsynch List**

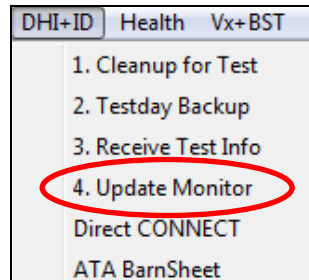
BNAME	PEN	DIM	RPRO	OVDAT	OVLUT	OVGNR	OVBRD
1026	1	81	FRESH	12/22/12	12/29/12	12/31/12	1/ 1/13
Total: 1							
BNAME	Barn Name (or Barn Number)						
PEN	Pen or String Number						
DIM	Days in Milk						
RPRO	Repro Code (FRESH,BRED,DRY etc)						
OVDAT	Date of Last Ovsynch shot						
OVLUT	Date of Ovsynch Lut shot						
OVGNR	Date of Ovsynch GNRH shot						
OVBRD	Date to Breed from ovsynch						

1026 received her GnRH shot to start on Ovsynch on 12/22. The next week, on 12/29, she will need her Lut shot. Then on 12/31 she needs her GnRH and will be bred on 1/1.

## Monitor Reports: A valuable snapshot

Monitor reports can help you track and review management numbers, herd inventory, and production data. This can help you to evaluate the impact of management decisions and help with future planning. Monitor should be run monthly after you download your Dairy One testday data file. Monitor reports are a snapshot of what is happening in your herd on the day it is run. It is important to run it monthly because we cannot run them for past dates. Ten months of data can be stored.

1. After you download your testday file, go to **DHI + ID** → **4. Update Monitor**

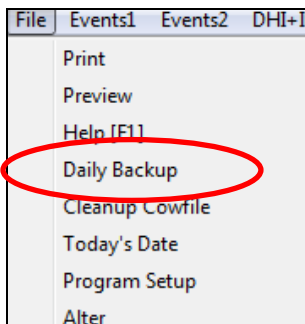


2. To view the report; go to **Prod** → **View Monitor Report**. You can update monitor goals in Prod → Change Monitor Goals

Prod	Mast	Misc	Help	#	Parameter	0315	0417	Goal
				1	Production			
			Testday DHIA Report	2	Total Milk	7531	7729	0
			Milk within Strings	3	Cows in Milk	98	103	0
			Post-Receive Report	4	AV Milk All Cow	63	65	65
			List-Sorted by MkDev	5	AvgMilk-MlkCows	72	75	70
			List of Low Fat Cows	6	AV Days in Milk	178	187	150
			Summary - Testday	7	ME305-MlkCows	24,9	24,5	22,0
			Summarize MUN	8	ME305-Lact=1	24,0	24,6	21,0
			Milk for past year	9	ME305-Lact=2	24,8	23,9	22,0
			Current milk graph	10	ME305-Lact>2	26,2	25,1	23,0
			<b>View Monitor Report</b>	11	ME305-FreshCows	22,0	22,8	23,0
			<b>Change Monitor Goals</b>	12				
				13	Reproduction			
				14	#NotBred,Opn>70	1	2	0
				15	#NoPgck,DIM>150	4	7	0
				16	#DaysOpn>150,PG	18	18	0
				17	AvgDOPN, PG	127	127	110
				18	Avg Tbrd, PG	2.2	2.2	2.0
				19	#HfrsOpn,>14Mo	0	1	0
				20	#NoPgck,Hfr>17M	1	3	0
				21				
				22	Inventory			
				23	# Adult Cows	118	118	0
				24	# Dry Cows	4	10	0
				25	# AdultsLeftHrd	10	6	0
				26	# Cows Freshned	31	9	0
				27	# Hfrs>15Months	38	44	0
				28	# Hfrs<16Months	65	59	0
				29	# Males	0	0	0
				30	Post-Recv			
				31	# Fat%<3.0%	4	4	0
				32	Management Milk	86	83	75
				33	Avg LinearScore	2.6	2.6	2.0
				34	#New Mast Infct	9	16	0
				35	Chronic Mast	10	5	0
				36				

## Daily Backups are critical

Daily Backups need to be an important part of your routine. When you have computer problems you don't want to lose your herd data too. Reinstalling on a new computer can be an easy process and the first step is a daily backup on a pen drive. A testday backup will have your herd information but not any of your herd parameters or custom reports. To make a daily backup go to **File** → **Daily Backup**. You will see a message that x:\herdcode.zip is being created with x being replaced with the letter of your pen drive and herdcode being replaced with your actual herdcode. The backup event will be listed on your activity tab as well. If you are having problems please call AMR group. This is one of the most important things you can do to help protect your data!



S 16:35

Created i:21111111.ZIP

## Monthly Events

The monthly event table is an easy way to look at what has happened on your farm throughout the month. All the events that you enter will be included in the table. The last 12 months of data are shown. **Misc** → **Monthly Events**

Event	Total	Apr11	May11	Jun11	Jul11	Aug11	Sep11	Oct11	Nov11	Dec11	Jan12	Feb12	Mar12	Apr12
FRESH	124	7	11	18	7	10	7	6	12	7	4	13	17	5
OK	2	0	1	0	0	0	1	0	0	0	0	0	0	0
RECK	7	1	0	0	0	5	0	0	0	0	1	0	0	0
HEAT	15	0	4	1	2	1	0	0	1	2	2	2	0	0
BRED	355	7	33	42	32	32	40	25	35	29	26	23	24	7
PREG	145	3	20	15	13	18	15	7	21	12	9	12	0	0
OPEN	170	4	13	23	17	13	25	17	14	15	16	11	2	0
PREV	6	0	0	0	0	3	1	0	0	0	0	0	2	0
MOVE	151	6	16	15	14	10	4	6	11	17	5	19	24	4
DRY	79	6	10	5	6	4	5	11	2	7	6	7	6	4
ABORT	11	2	0	2	0	1	1	1	0	1	0	2	0	1
DNB	24	3	3	2	1	0	1	3	3	0	1	0	6	1
SOLD	44	1	3	5	1	3	4	0	9	2	2	2	7	5
DIED	9	0	0	2	0	3	1	0	1	0	0	2	0	0
CHECK	1	0	0	0	0	0	0	0	0	0	0	1	0	0
FOOTRIM	5	0	0	0	0	0	0	0	0	0	0	5	0	0
VACC	227	19	54	10	12	12	13	22	8	21	12	20	18	6
PROST	23	0	3	0	5	5	0	0	6	0	4	0	0	0
CULTURE	4	0	0	0	0	0	4	0	0	0	0	0	0	0
KETOSIS	2	0	0	0	0	1	0	0	0	1	0	0	0	0
LAME	38	1	2	0	0	2	2	7	5	4	1	9	4	1
MAST	9	0	0	1	0	0	0	1	0	1	0	1	5	0
METR	2	0	1	0	0	0	1	0	0	0	0	0	0	0
MF	9	0	2	2	0	0	1	0	1	0	0	2	0	1
OFFFEED	1	0	0	0	0	0	0	0	0	1	0	0	0	0
USER	14	0	0	3	1	3	3	0	1	3	0	0	0	0
TOTALS	1477	60	176	146	111	126	129	106	130	123	89	131	115	35

## **Dairy Comp LS - more than Scout, less than Dairy Comp**

Dairy Comp LS is a full version of Dairy Comp now available for farms under 400 cows and 480 heifers, or heifer growers under 480 heifers. If you are expanding your herd, need to store more information, need more specific lists, or find yourself spending extra time making lists by hand or in other programs, Dairy Comp LS could be right for your farm.

Benefits of Dairy Comp LS:

- It is an easy upgrade from Scout
- It has the ability to develop complex management lists
- It can automate the reproductive program lists and enrollment.
- It has greater flexibility to handle different reproductive programs and variations within a program
- It has a command line that allows you to make specific reports on the fly
- It has the ability to automate report printing
- It is compatible with other Dairy One services, including daily milk interfaces, heat detection interfaces, Pocket Cowcard, client and shadow copies, testday downloads, FeedWatch, and I-trans (record exchange with heifer growers)

## **PC Green Service**

Your PC contains valuable information- don't lose it!

- Are you prepared right now for a hard drive failure?
- Do you have a good reliable backup system? Have you checked it recently?
- Are your PC's fans working correctly?
- Have you ever taken off the cover of your PC and cleaned inside?

A PC Green service visit can help to address these critical questions. A trained member of the Agriculture Resource Management (AMR) group can visit your farm and perform a comprehensive cleaning and diagnostic routine. PC Greens can alert you to problems before they occur. While a PC Green can't guarantee that you will never experience a PC failure, a regular maintenance plan is the best way to protect yourself from sudden data loss and hours of frustration.

PC Green services include:

Cleaning Services

- Vacuum PCU, printer and keyboard
- Clean monitor and keyboard
- Clean immediate PC working area
- Free up hard disk space

Diagnostic Services

- Check hard disk and communication system
- Perform system check and free up available memory

Scout Software Review

- Examine program for proper functioning and settings
- Check backup routine for completeness
- Test recent backup media for defects
- Setup a pen drive backup if needed